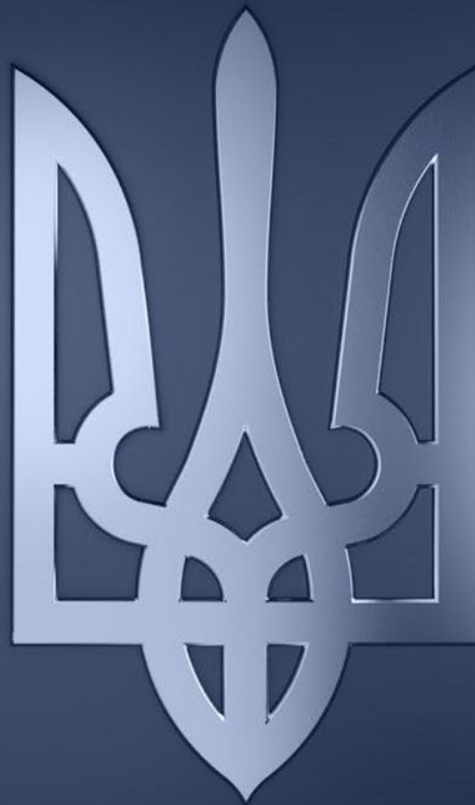




Державна  
митна служба  
України

# Дані ЗЕД України



**USAID**  
FROM THE AMERICAN PEOPLE

**EU4PFM**

Програма Європейського Союзу (ЕС) з підтримки управління державними фінансами в Україні

**Qlik** 

# Who does use BI solution?



**Business**



**Government**



**Customs**

# BI - Situation "AS IT WAS"



Tables in word, pdf, xls  
with **10-45 days**  
publishing delay :(



Petrivka - DarkNet Market

# BI Trade in figures



Opened data for 2017-  
now



~20+ M declarations



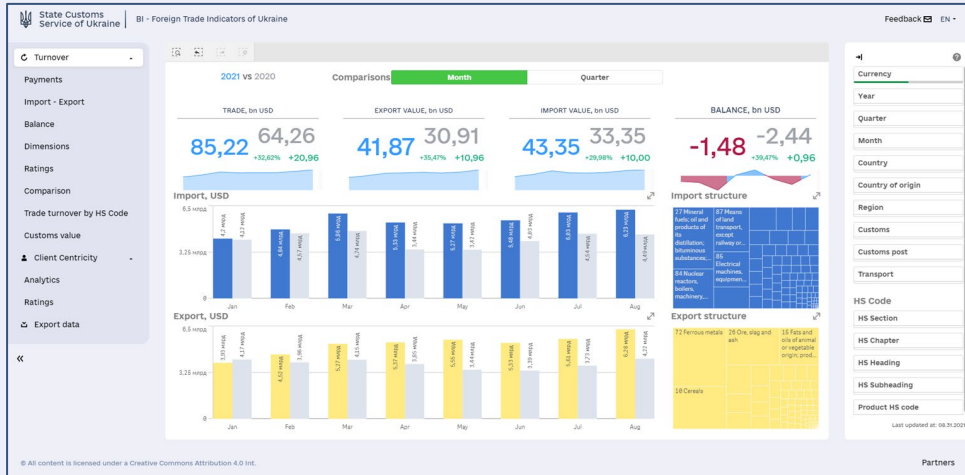
20+ analytic sheets



15 filters



22 indicators



Regular data update  
**2nd day** of the new month

# Market Feedback is AMAZING :)

Users for last 1.5+y

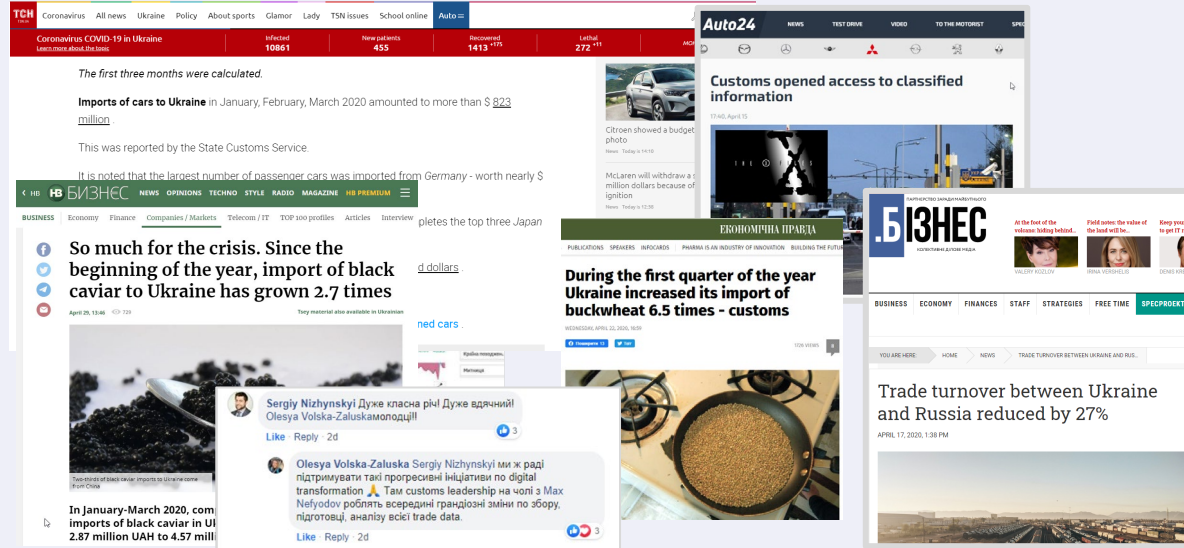
~250 K

Daily users in business day

~1 500

Concurrent users (max)

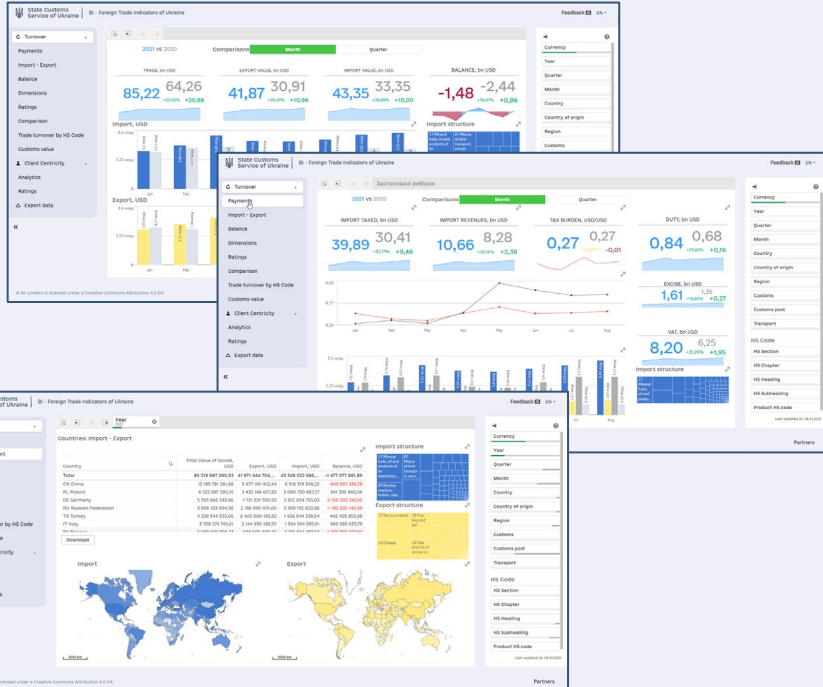
1 20+



The collage features several news snippets and social media posts:

- TCN** Coronavirus COVID-19 in Ukraine: Infected 10861, New patients 455, Recovered 1413, Lethal 272.
- Auto24** Customs opened access to classified information (April 15).
- БІЗНЕС** So much for the crisis. Since the beginning of the year, import of black caviar to Ukraine has grown 2.7 times (April 26, 2020).
- БІЗНЕС** During the first quarter of the year Ukraine increased its import of buckwheat 6.5 times - customs (April 23, 2020).
- БІЗНЕС** Trade turnover between Ukraine and Russia reduced by 27% (April 17, 2020).
- Facebook** Post by Olesya Volska-Zaluska and Sergiy Nizhynskiy: "Дуже класна річ! Дуже вдячний! Олесю Volska-Zaluska, Sergiy Nizhynskiy ми ж раді підтримувати такі прогресивні ініціативи по digital transformation. Такі customs leadership на чолі з Max Nelyudov роблять асердивні грандіозні зміни по збору, підготовці, аналізу всієї trade data."

# BIM - Key Benefits for Business



Online data **VS** days/weeks for manual calculation

Accurate & **legal** forecast of average price & taxes

Increased transparency in G2B


Goods Market structure & Volume

Logistic channels



Trend analysis in different angles

Great Basis **for further boost** extension


# Reuse BI data in own ERP/CRM via API

 State Customs Service of Ukraine

BI - Export BI Trade data


Feedback  EN 


- Turnover
- Payments
- Import - Export
- Balance
- Dimensions
- Ratings
- Comparison
- Trade turnover by HS Code
- Customs value
- Client Centricity
- Analytics
- Ratings
- Export data**




**Bi Trade data** beta

Download, analyze


Download full DB 


 API documentation





### Select options

Selection generation may take some time depending on the amount of data and server load.

Start date:  


End date:  

Dimensions:  

KPI:  

The level of data grouping:

Currency:



Last updated at:  
31.08.2021

© All content is licensed under a Creative Commons Attribution 4.0 Int.

Partners



# BI - DEMO of real business cases



Live Demo on [bi.customs.gov.ua](https://bi.customs.gov.ua)



Thanks for your time!

[service-desk@customs.gov.ua](mailto:service-desk@customs.gov.ua)

# Analyze

## with BI and Open Data from Customs ;)

